

# STEEPLE RUN NEWS

A PUBLICATION OF THE STEEPLE RUN HOMEOWNERS' ASSOCIATION

Volume 5, Issue 4

SUMMER 2010

## President's Message by Therese G.



The days have grown long and the Fourth of July has just concluded. A couple new families have joined the neighborhood. Welcome! It is good to see many of you taking advantage of the nice weather, such as working in the yard or taking a walk.

The monuments at the entrances look great. Thanks to the LeBlancs, O'Malleys and Mike R. for donating their time to cleanup the area around the monuments. They weeded and mulched all the flower beds. In addition, with their help, some additional plants have been

added, enhancing the overall appearance of our entrances.



Just a reminder that the speed in the neighborhood is 25 mph. There are children outside playing or riding bicycles. Please slow down and watch for them. Parents, please also remind your children to watch for cars and to obey all traffic signs. It only takes a second for a tragedy to occur.

Karen and the Social Committee continue to look for ways to allow us to meet in



fun ways. We had to cancel the Block Party due to lack of response. If there is something that you would like to do to, please contact Karen Malcolm with your ideas.

Summer is speeding by. Soon everyone will start getting ready for school. While you take advantage of the rest of the summer, please say hi to anyone you see out in the neighborhood.



## Entrance Monuments Receive New Plants

Our four entrance monuments have been professionally updated with 21 new plantings. The plants were chosen for their disease resistance, color, hardiness and minimal maintenance needs.

The Crystal Lake Ave. entrance received Blue Oats ornamental grass clumps along the decorative fencing and Double Red Knockout rose bushes in the

front center of each planting bed.

The Sands Road entrance also received 2 of the Double Red Knockout roses in each planting bed. The landscaping plan originally called for 3 rose bushes in each of the Sands Rd. beds but, in order to remain within budget, the number was decreased to 2 apiece. If anyone would like to donate the

additional rose plant/s, space has been left in the planting beds, according to the designed plan.

Thank you Mike R, Joe O., Herb and Linda L. and all other involved neighbors for your efforts in maintaining these beds. We only get one chance to make a good first impression!

### Special Dates

- JULY 1—SRHA DUES DEADLINE
- SOMETIME IN SEPTEMBER—ARROW SEPTIC PUMP-OUT
- OCTOBER 14 7:30 P.M. SRHA BOARD MEETING

### Inside this issue:

TREASURER'S REPORT	2
SRHA DUES	2
NEIGHBORHOOD SPOT-LIGHT	3
RADON	4
LOST PET WEBSITE	4
STANDING WATER	4
PREFERRED CONTRACTOR	5
DIRECTORY UPDATE	5
BACK COVER	6



## STEEPLE RUN NEWS

### TREASURER'S REPORT by Joe O.

FISCAL YEAR 2009-2010					
	1st QTR	2nd QTR	3rd QTR	4th QTR	TOTAL
<b>INCOME</b>	6,205.00	0.00	0.00	0.00	6,205.00
<b>EXPENSES</b>	969.91	2,187.95	536.15	604.05	4,298.06
<b>NET CASH FLOW</b>					1,906.94
<b>EXPENSE CATEGORY</b>					<b>YTD TOTAL</b>
Communications	127.61	275.35	116.12	314.22	833.30
Legal	0.00	0.00	50.00	0.00	50.00
Maintenance	698.03	886.93	237.41	165.00	1,987.37
Office Supplies	0.00	0.00	0.00	0.00	0.00
Insurance	0.00	883.00	0.00	0.00	883.00
Utilities	144.27	142.67	132.62	124.83	544.39
Social	0.00	0.00	0.00	0.00	0.00
<b>TOTAL</b>	969.91	2,187.95	536.15	604.05	4,298.06

"THE ANNUAL ASSOCIATION ASSESSMENT IS NOW DUE AND PAYABLE. YOUR COOPERATION IN PAYMENT IN A TIMELY MANNER IS APPRECIATED."

We finished the fiscal year with a positive cash flow and a higher beginning balance for the new fiscal year. This is the result of efforts across the board to reduce costs and rely on volunteers to do some of the monument maintenance and repairs. Lower insurance and electrical use also played a significant part in this favorable outcome. Thanks to everyone involved for their time and efforts.

Looking forward to the new fiscal year, we anticipate extra expenses for upgrading the plantings at the monuments. We are also exploring an upgrade for the signs in the neighborhood. The annual association assessment is now due and payable. Your cooperation in payment in a timely manner is appreciated.

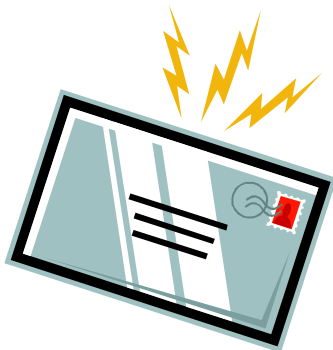
### SRHA Annual Assessment Due July 1

The SRHA Annual Assessment to be paid by each homeowner was due July 1. As of July 8, the dues have been paid by 58 of our 74 homes. Thank you for your prompt attention to this important matter.

If you have not already paid your 2010-2011 dues, please send a \$85 check to SRHA Treasurer Joe O. as soon as possible.

The mailing address is:

SRHA  
PO Box 1350  
Crystal Lake, IL 60039-1350



## NEIGHBORHOOD SPOTLIGHT: Melissa R.

Melissa R. competed in the 2010 Miss Crystal Lake pageant this spring. She finished as first runner-up.

place in the Miss Crystal Lake pageant. Priyanka V. also was first runner-up a few years ago in the Miss CL pageant.

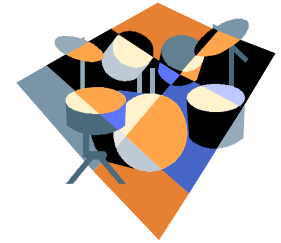
Melissa is the second Steeple Run resident to Congratulations, Mel!



## NEIGHBORHOOD SPOTLIGHT: Jimmy P.

Jimmy P. and his *Black Cat Bone* band mates were named Artist of the Week by the Northwest Herald in February. Good job, guys!

We all missed an opportunity to enjoy their music when the Block Party in June. The band has a website: <http://blackcatbones.webs.com> for their upcoming gigs.



## Neighborhood Spotlight: SHIVAM and PRIYANKA V

Shivam has graduated from the Illinois Math and Science Academy this spring as one of the Perfect 10 students in his graduating class and as a member of the National

Honor Society.

He will be attending Penn State this fall as a Pre-Med major and he already has a reserved spot at their medical college.

Shivam's sister Priyanka starts medical school this fall after graduating from Boston College in only 3 years in their accelerated program.



**CONGRATULATIONS GRADS!**

## NEIGHBORHOOD SPOTLIGHT: Elyse H.

Elyse graduated from Northwestern University this May with an undergraduate degree in Organization Behavior with a Business minor.

## NEIGHBORHOOD SPOTLIGHT: Paul G.

Paul graduated from Prairie Ridge High School with honors. He received a scholarship from the Spencer family in honor of their son who passed away during his senior year at Prairie Ridge. Paul will be studying Computer Science at the U of I in Urbana-Champaign.



## NEIGHBORHOOD SPOTLIGHT: Joey P.

Joey P. is going to Hollywood!

The Guitar Center-sponsored 4th Annual King of the Blues competition is a "nationwide search for the next great undiscovered blues guitar player." Joey has already beat THOUSANDS of other guitarists who had entered the competition and on July 15th at the Guitar Center in Arlington Heights, Joey advanced to the finals, representing the North Central region.

The final competition between the 5 regional winners will take place at The House of Blues on the Sunset Strip in West Hollywood on September 2.

Here's an eyewitness account from an unidentified blogger who attended the July 15 competition: "Now Joey brought something new to the table and it impressed me. Joey used his volume control to add swells and violin effects to his routine. I have never seen any other contestant do this before and he did it so perfectly and it fit just like a glove. He had my vote right there. The crowd was definitely wowed."

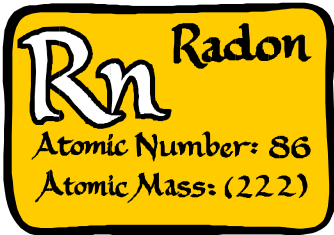
The King of the Blues will win \$25,000, endorsement deals, a feature in *Guitar World* Magazine, instruments and equipment.

Good Luck, Joey!



## STEEPLE RUN NEWS

### PREFERRED CONTRACTOR: Indoor Radon Levels



Do you know your home's radon level?! A Steeple Run resident recently found out the hard way—when high levels held up the sale of their home. Their radon problem had to be mitigated in a hurry and the owners paid a premium for the service.

If you don't know the radon level in your home, it is smart to test when you have the luxury of time to deal with any consequences.

Our county is in a Medium Risk radon area. Not all homes in our subdivision have elevated radon levels, but some do. Radon is a naturally occurring, colorless, odorless, radioactive gas that can be harmful when trapped indoors. It is the second leading cause of lung cancer after smoking.

Radon test kits may be purchased at the McHenry County Department of Health for

\$6 from 8-4:30. An excellent radon information sheet is available from the National Safety Council ([www.nsc.org/issues/radon/faq.htm](http://www.nsc.org/issues/radon/faq.htm)). For more information or questions, please call the McHenry Department of Health at 815-334-4585.

For your peace of mind, get your home tested now. The Preferred Contractor Program is getting quotes for a Radon Mitigation offer this fall.

### Animal Control Launches Website for Lost Pets

[WWW.MCDH.INFO](http://WWW.MCDH.INFO)  
ANIMAL CONTROL  
LOST PETS

McHenry County Animal Control has started to post online descriptions of 'found' pets to help owners reunite with their pets.

The site also has tips for finding your lost pet and a list of other animal shelters that might have your

missing pet.

Animal Control continues to encourage microchips in pets to have the best odds of being reunited

Lost pet reports can be filled out in person at Animal Control, 100 N. Virginia (Woodstock and

Hwy 14). Last year, half of the dogs and only 6% of the cats brought to Animal Control were claimed by their owners. After 7 days, the animal may be transferred to rescue groups or made available for adoption.

### Water, Water Everywhere



The rainy weather that we experienced in June gave us an ideal opportunity to look for low spots in our yards. If you had standing water for more than 2 days, you have an ideal breeding ground for mosquitoes.

Standing water can be eliminated by correcting the

grade so that it drains properly and flows to the retention areas. Add soil to bring up the level and to restore the slope necessary to drain the water.

Low spots that accumulate water can also be treated with granular larvacides (Dunk brand) available at Home Depot. Depending on the location, water that

stands for more than 2 days can be treated by professionals if you notify the township.

To eliminate even more potential mosquito breeding places, remember to empty saucers under flower pots, gutters and other water-holding items outside of your home.

## PREFERRED CONTRACTOR: Arrow Septic

Although the dates are not yet set, we are anticipating that another septic pump out offer can be arranged for a Saturday in September.

Arrow Septic has offered our SRHA members a good price in the past and we

are working to secure similar terms for the September opportunity. Although this has proven to be a popular program, only 2 homes participated in the program this spring. It is recommended that the septic tank be pumped every 2 years.

The dates and details will appear on our website as they are finalized; the information will not appear in the next newsletter because it is scheduled for publication after the proposed service dates.



**NOTE:** *The SRHA Board does not recommend the use of any contractor over another nor does the Board guarantee the cost or quality of the services provided but offers this information to SRHA members to use as they see fit. Other contractors are welcome to submit separate bids as well.*

## NEW NEIGHBORS: The C. Family

The former Grasser home on Church Hill has a new family moving in this month. Currently living off of Randall Road, the Chacon's are friends of the Fox family. Please welcome David C., his wife Maria and their 2 sons, David and Daniel. David will be a new freshman at Prairie Ridge this fall and Daniel is already friends with Ian F.

## NEW NEIGHBORS: SUSANNE (Sue) S.

Irene C.'s sister, Susanne S., has moved into Steeple Run from South Barington. Please welcome her to the neighborhood.

## DIRECTORY UPDATE: Going Texas Way

Best wishes to the Wendt's who will be moving back to the Dallas area and to the Moreland's who are being relocated to Austin, TX. Please update your directory to reflect their recent moves.

## GOT VACATION PLANS?

When you are planning your vacation, your thoughts are focused on that faraway place. Please don't forget to consider the home you're leaving behind while you plan. Include a trusted neighbor in your planning. Let them know of your travel plans and emergency contact phone numbers. Ask them to put your trash out for pickup—and to wheel the bin back afterwards. Stop the mail and paper deliveries or have a friend or neighbor collect them for you. Nothing announces that the house is vacant more than a dark house and newspapers accumulating on the driveway.

## 25 MPH SPEED LIMIT

The speed limit in our entire neighborhood is 25 mph and yet many cars are zipping on our streets, some driven by Steeple Run residents. Please remind every driver in your household to slow down to 25.

“PLEASE USE  
THE ATTACHED  
STICKER TO  
UPDATE YOUR  
LIME GREEN  
STEEPLE RUN  
DIRECTORY”





Japanese beetle traps attract more beetles to the area. They stop and munch on foliage in the neighborhood and the majority do not enter the trap at all.



A PUBLICATION OF THE STEEPLE RUN HOMEOWNERS' ASSOCIATION

Steeple Run Homeowners' Association  
 PO Box 1350  
 Crystal Lake, IL 60039-1350  
 Email:  
 secretary@steeplerun.org

**We're on the Web:**  
**[www.steeplerun.org](http://www.steeplerun.org)**



**“4.08 NO SIGNS OF ANY CHARACTER SHALL BE ALLOWED ON ANY LOT EXCEPT ONE SIGN OF NOT MORE THAN FIVE SQUARE FEET ADVERTISING THE PROPERTY FOR SALE OR RENT. “**

## ADVERTISING SIGNS

Please remember—only For Sale signs are permitted in Steeple Run, as defined in our Covenants:

*4.08 No signs of any character shall be allowed on any Lot except one sign of not more than five square feet advertising the property for sale or rent.*

Temporary signs are sprouting up like weeds. These include signs advertising a contractor's services, signs encouraging joining sports teams, and sale signs.

Please limit how long these signs are on display on your lawn to a short period of time. Yard sale signs have been responsibly removed when the sale is over. Workmen who display their advertising on your property should remove it when they leave at the end of the job. When the services provided are continuing, such as Christmas decorations installer or yard care businesses, the signs should not be displayed for the entire growing season or holiday season—1 week should be more than enough for your neighbors to know who has done the work for you.